

Free eNewsletter



### Shop By Type

Cable Assemblies  
Adapters  
Connectors  
Rack Panels  
Bulk Cable  
Tools  
Switch Boxes  
Network Cards  
Hubs & Switches  
Converters & Transceivers  
KVM Switches  
Antennas

Overstock/Sale Items  
Top 10 Products

### Shop By Category

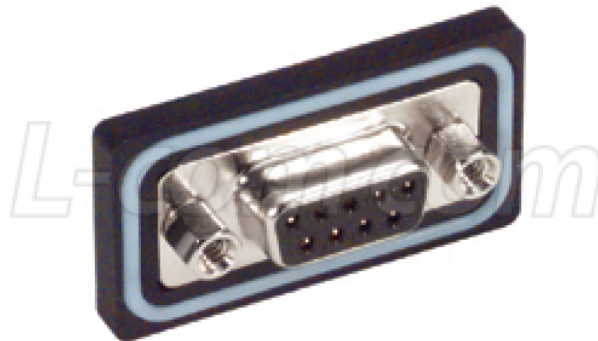
IEEE-488 GPIB  
Coaxial  
Monitor, Video  
Fiber Optic  
D-Subminiature  
Modular  
USB, DIN, Firewire, SCSI, and Others  
Wireless Infrastructure

You Are Here: [Home](#) > [D-Subminiature](#) > [Connectors](#) > [WPSD](#) > **WPSD9S**

## Waterproof Panel Mount Solder Cup D-Sub Connector, DB9F

### Features for this product

- Waterproof D-sub panel mount solder connectors
- IP67 rating provides protection under harsh conditions
- Mounts on any panel or enclosure 0.078" thick or smaller
- Gold plated contacts provide reliable connections with repeated mating cycles
- Available in DB15, DB25 & HD15 sizes, male & female genders



Harsh outdoor or indoor environments can destroy electronic equipment. Standard D-sub connectors are not intended to withstand contaminants such as water and dust. This waterproof solder cup DB9 female connectors will accommodate wire ranges from 30 - 20 AWG. Construction features gold plated brass contacts, nickel plated steel shells, and a silicone insulating ring. Maximum recommended panel thickness is 0.078"

#### Details for this D-Subminiature product

L-com Item # WPSD9S

Manufacturer L-com

ASIN # [\(More\)](#) B000AA49C0

UPC # [\(More\)](#) 822335041226

RoHS Status [RoHS Compliant](#)

 [Catalog Page](#)

 [2D Drawing \(.pdf\)](#)

 [3D CAD Model \(.step\)](#)

### Product Wizards

- Cable Assemblies
- Adapters
- Connectors
- Rack Panels
- Tools
- Switch Boxes
- Network Cards
- Hubs or Switches
- Ethernet Converters
- KVM Switches

### Technical Resources

- FAQs
- Connector Chart
- Glossary
- Tutorials
- Tips and Videos
- White Papers
- Catalog Downloads
- eNewsletter Archive



L-com is ISO 9001:2008

[UL Certified](#)



GSA

Item #	Description	1-9	10-24	25-99	100-249	250-499
--------	-------------	-----	-------	-------	---------	---------

**Waterproof D-Sub Connectors and Backshells - IEC IP67 Rated**

Harsh outdoor or indoor environments can destroy electronic equipment. Standard D-Sub connectors are not intended to withstand contaminants such as water and dust. By utilizing tough ABS housings, rubber gaskets and silicone insulating rings, these products achieve IEC IP67 ratings. Panel mounted D-Sub solder connectors are rear mounted and fit into standard D-Sub holes. Backshells conform to a variety of cable diameters by adjusting the sealing nut. L-com will manufacture cable assemblies using waterproof backshells with modest minimum requirements.

**Waterproof D-Sub Panel Mount Solder Connectors**

These solder cup connectors are available in male or female genders and DB9, DB15, DB25 and HD15 sizes. They will accommodate wire ranges from 30 - 20AWG. Construction features gold plated brass contacts, nickel plated steel shells and a silicone insulating ring. Maximum recommended panel thickness is 0.078".

<a href="#">WPSD9P</a>	Waterproof Panel Mount Solder Cup D-Sub Connector, DB9M
<a href="#">WPSD9S</a>	Waterproof Panel Mount Solder Cup D-Sub Connector, DB9F
<a href="#">WPSD15P</a>	Waterproof Panel Mount Solder Cup D-Sub Connector, DB15M
<a href="#">WPSD15S</a>	Waterproof Panel Mount Solder Cup D-Sub Connector, DB15F
<a href="#">WPSD25P</a>	Waterproof Panel Mount Solder Cup D-Sub Connector, DB25M
<a href="#">WPSD25S</a>	Waterproof Panel Mount Solder Cup D-Sub Connector, DB25F
<a href="#">WPSDH15P</a>	Waterproof Panel Mount Solder Cup D-Sub Connector, HD15M
<a href="#">WPSDH15S</a>	Waterproof Panel Mount Solder Cup D-Sub Connector, HD15F

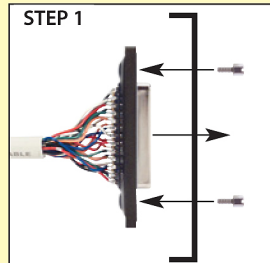
**Waterproof D-Sub Backshell Kits**

These backshell kits include solder cup connectors and are also available in male or female genders and DB9, DB15, DB25 and HD15 sizes. The connectors will accommodate wire ranges from 30 - 20AWG. Backshell construction features ABS housings, nylon seals, nickel plated brass thumbscrews and rubber sealing gaskets to insure IEC IP67 rating. Color: Black.

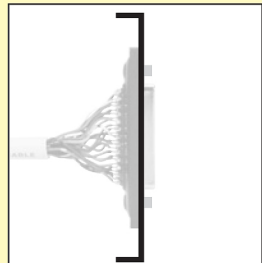
<a href="#">WPDB9P-KIT</a>	Waterproof D-Sub Backshell Kit, DB9M
<a href="#">WPDB9S-KIT</a>	Waterproof D-Sub Backshell Kit, DB9F
<a href="#">WPDB15P-KIT</a>	Waterproof D-Sub Backshell Kit, DB15M
<a href="#">WPDB15S-KIT</a>	Waterproof D-Sub Backshell Kit, DB15F
<a href="#">WPDB25P-KIT</a>	Waterproof D-Sub Backshell Kit, DB25M
<a href="#">WPDB25S-KIT</a>	Waterproof D-Sub Backshell Kit, DB25F
<a href="#">WPHDB15P-KIT</a>	Waterproof D-Sub Backshell Kit, HD15M
<a href="#">WPHDB15S-KIT</a>	Waterproof D-Sub Backshell Kit, HD15F



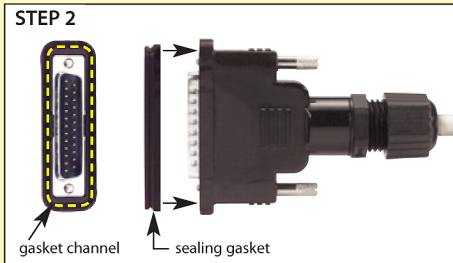
**Tip** How to apply panel mount waterproof D-Sub products



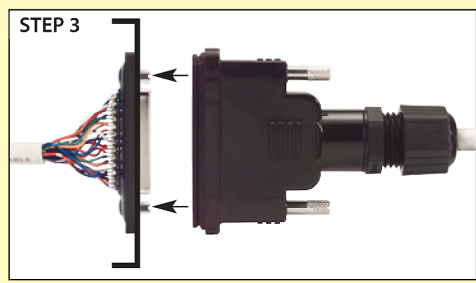
Mount D-Sub connector from inside of panel/enclosure using hex jack screws provided.



Maximum panel thickness is 0.078"



Apply sealing gasket (supplied with backshell kit) in backshell channel around perimeter of D-Sub connector.



Mate connectors and secure backshell thumbscrews to threaded jackscrews.



Waterproof IP67 rating is achieved by gaskets/seals in backshell and silicone seal ring in connector.